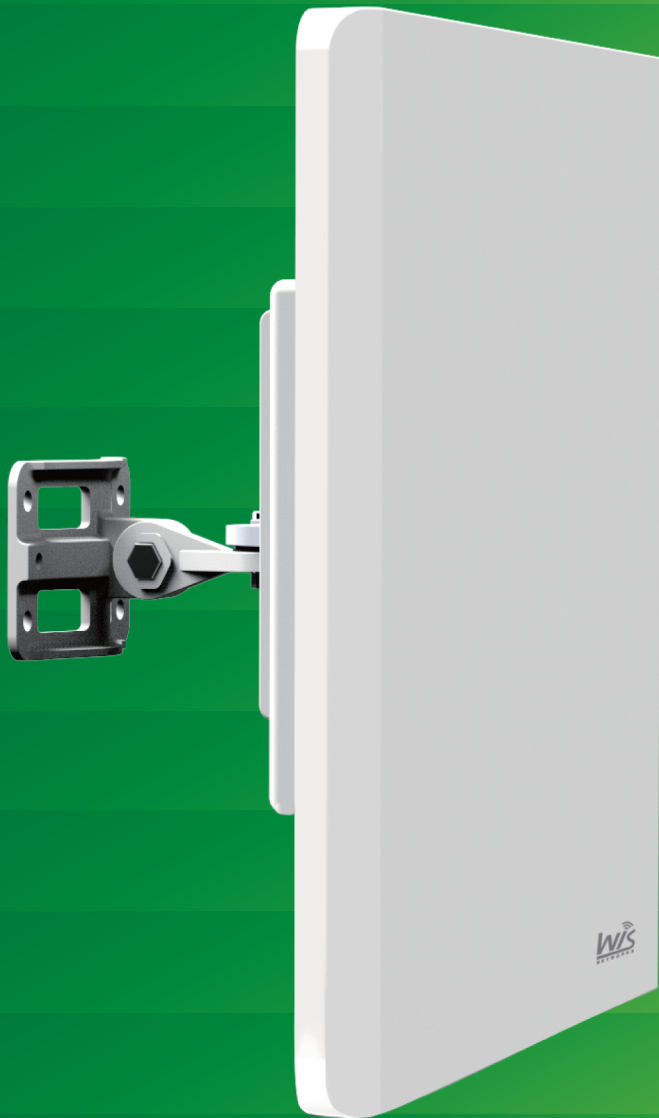




www.wisnetworks.com



AC 900
802.11ac/n/a

5GHz 867Mbps Outdoor 25dBi Wireless
TDMA Panel Bridge

WIS-L525AC

Version 1.0

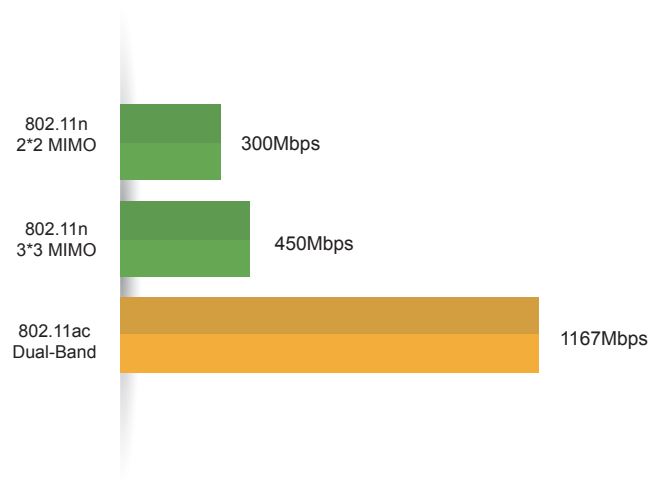
Product Overview

WIS-L525AC is a robust outdoor wireless long range bridge featuring 802.11ac technology for high end wireless point to point connection. Featuring 11ac high power wireless technology, the WIS-L525AC is ideal for WISP optimizing and improving their network backhaul capacity.

Features

Extremely High Speed Connectivity

- 802.11ac wireless standard
- 3x speed than 802.11n devices
- Up to 500Mbps real TCP throughput
- Gigabit LAN port



Amazing Outdoor Performance

- 50km+ availability backhaul
- Up to 30dBm tx power
- WiD TDMA 11AC



Robust Outdoor Features

- IP67 Die-cast Aluminum case
- Lightning Protection Module
- -40°C~70°C Working Temperature

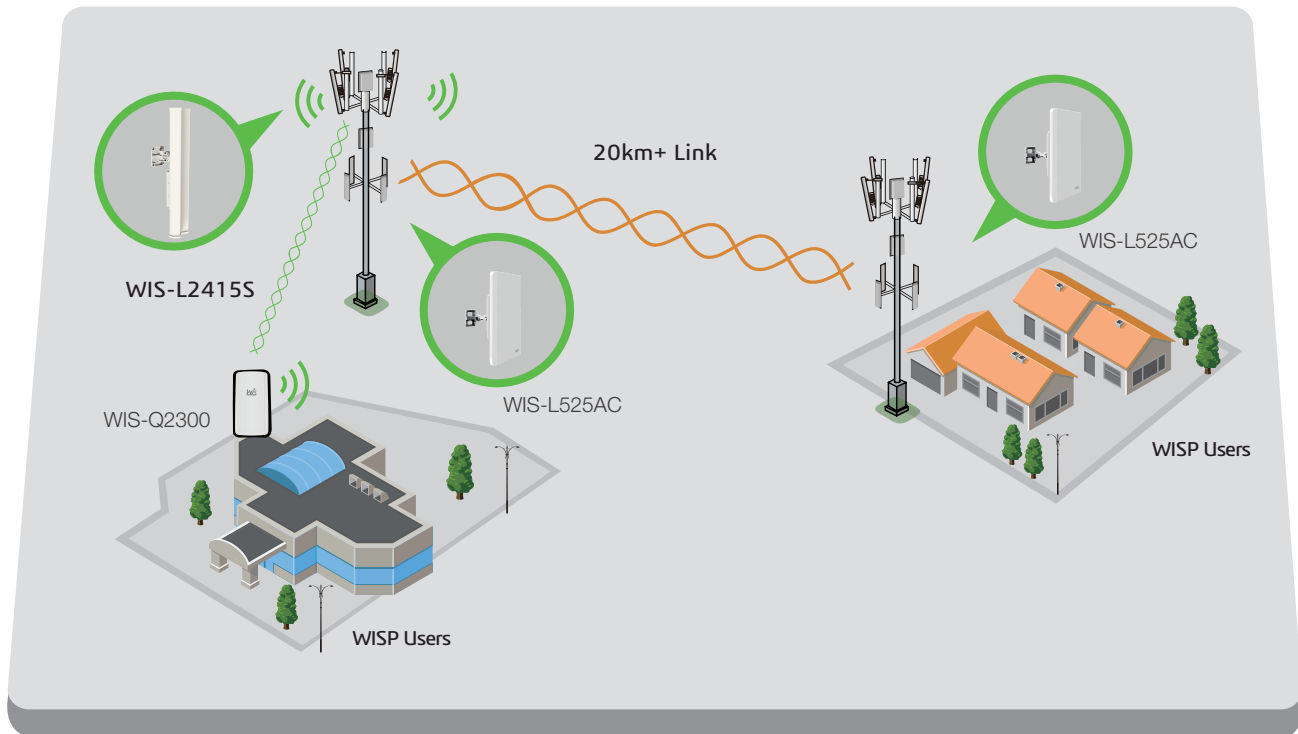


Features and Benefits

- WiD TDMA greatly improves the network scalability in throughput and latency
- Compliant with 802.11ac/n/a, speed up to 867Mbps
- Gigabit LAN port helps get maximum wireless performance
- Up to 500Mbps real TCP throughput
- High output transmission power and receive sensitivity optimized
- Easy deployment and adjustment with provided mounting kits
- 24V Passive PoE with remote reset for flexible deployment



Network Diagram



Specification

> Radio

- 802.11ac/n/a radio (Atheros 720MHz)
- Speed up to 867 Mbps
- Frequency Range: 5.150-5.250GHz
5.250-5.350GHz (Support DFS)
5.470-5.725GHz (Support DFS)
5.725-5.825GHz
- Tx Power 27dBm
- Rx Sensitivity 867Mbps: -67dBm@10% PER
300M: -74dBm@10% PER
54M: -78dBm@10% PER
1M: -98dBm@10% PER

> Antenna

- 25dBi dual-polarized panel directional antenna
- Beamwidth(HPBW) Horizontal: 11°, Vertical: 11°
- Open space up to 1~50km (dependent)

>Physical Parameters

- Dimension: 370*370*93mm
- Weight: 2.5kg
- Enclosure: Die-cast Aluminum
- ESD Protection: 16kV
- Lightning Protection: 8kV
- Working Temp: -40 ~ 70°C
- Storage Temp: -40 ~85°C
- Working Humidity: 10%~95% non-condensing

> Power

- 24VDC, 0.75A
- Power Consumption: 6W

>Security

- Integrated Firewall
- WPA/WPA2;WPA-PSK/WPA2-PSK (AES/TKIP) Encryption; 64/128-bit WEP;

> Interfaces

- 1x 10/100/1000 Base-T Ethernet (Gigabit LAN with Passive PoE)
- Grounding Terminal

> LED

- Power:On/Off
- LAN:On/Off/Flashing
- WLAN:On/Off/Flashing
- RSSI Signal: 1,2,3

>Warranty

- 2 Year

>Certification

- CE, FCC, RoHS

>Package content

- WIS-L525AC
- Quick Setup Guide
- Power Adapter with PoE
- Mounting kits

Wisnetworks Technologies Co., Ltd.

Sales e-mail: info@wisnetworks.com Web: www.wisnetworks.com

Community: community.wisnetworks.com

Address: No.77, FuTe West 3 Road, China (Shanghai) Pilot Free Trade Zone